



# GAT MONTHLY MEMBERSHIP PROGRESS REPORT

Results as of: 5/31/2024

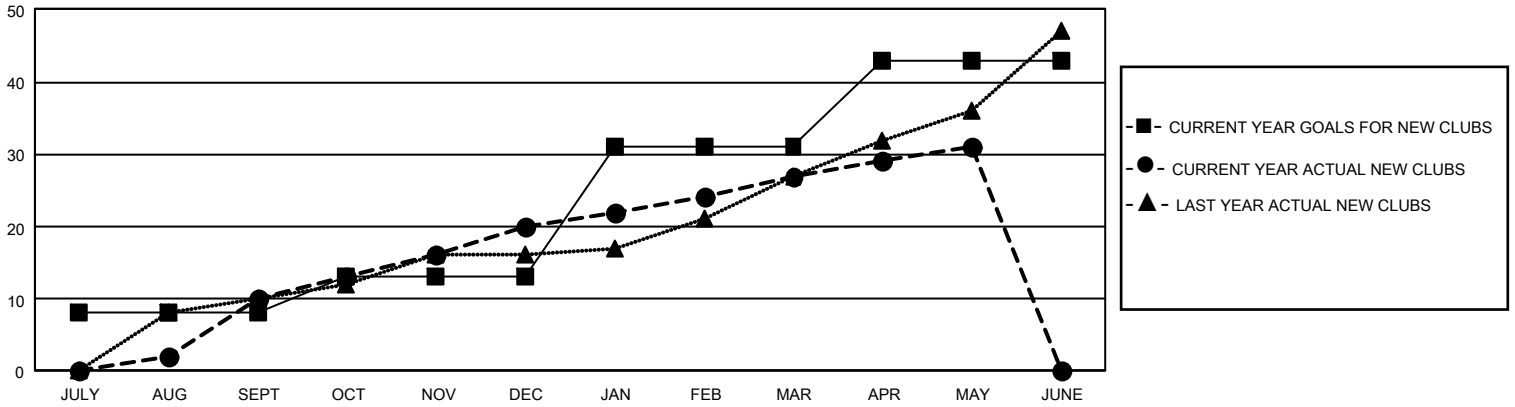
## GMT Constitutional Area 3, Group B

REPORT DOES NOT INCLUDE CLUBS IN UNDISTRICTED AREAS.

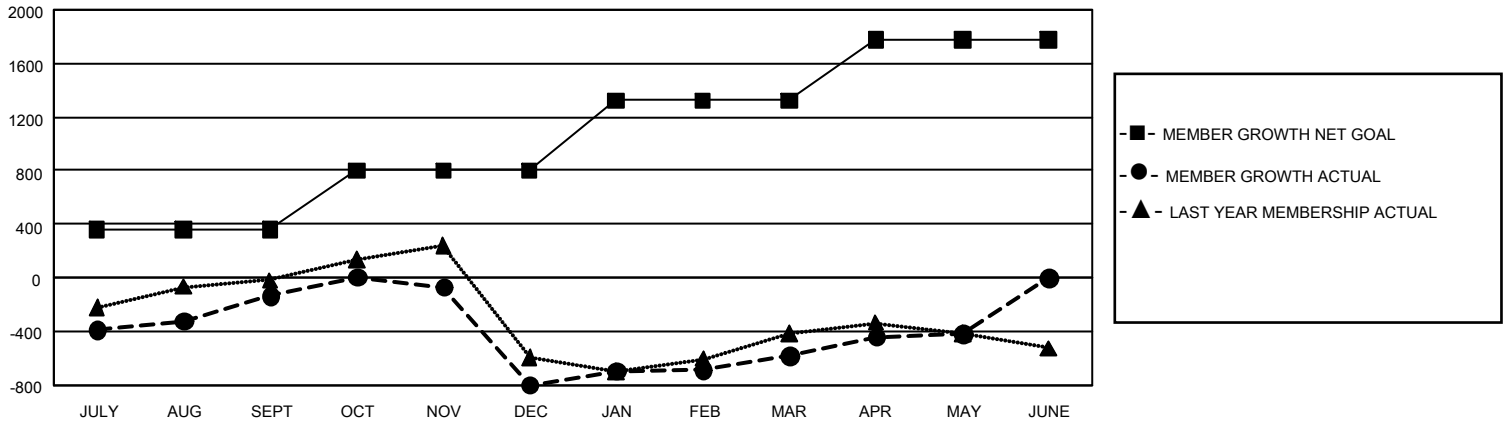
Clubs			
RESULTS FOR 2023-2024			
QUARTER	NEW CLUB GOAL	NEW CLUBS	DROPPED CLUBS
JULY/AUG/SEPT	24	10	6
OCT/NOV/DEC	15	10	19
JAN/FEB/MAR	54	7	3
APR/MAY/JUNE	36	4	3

Members			
RESULTS FOR 2023-2024			
QUARTER	MEMBER GROWTH NET GOAL	MEMBER GROWTH ACTUAL	DROPPED MEMBERS ACTUAL (including transfers)
JULY/AUG/SEPT	360	842	923
OCT/NOV/DEC	441	849	1,454
JAN/FEB/MAR	521	705	380
APR/MAY/JUNE	456	513	321

GOALS AND ACTUAL NEW CLUBS CUMULATIVE



GOALS AND ACTUAL MEMBERS CUMULATIVE



<b>DROPPED CLUBS: 31</b>	475 CLUBS OF 959 ADDED 1 OR MORE NEW MEMBERS	<b>GENDER DISTRIBUTION</b>	
		MALE 10,687 (41.75%) FEMALE 14,905 (58.23%) NON BINARY 0 (0.00%) PREFER NOT TO ANSWER 3 (0.01%)	
<b>DROPPED MEMBERS</b>		<a href="#">CLICK HERE FOR CUMULATIVE MEMBERSHIP DATA</a>	
DECEASED 124 CLUB CANCELLED 383 OTHER 2,567 <b>TOTAL 3,074</b>	TOTAL FAMILY UNIT MEMBERS 6,183 FAMILY MEMBERS PAYING HALF DUES 3,626		